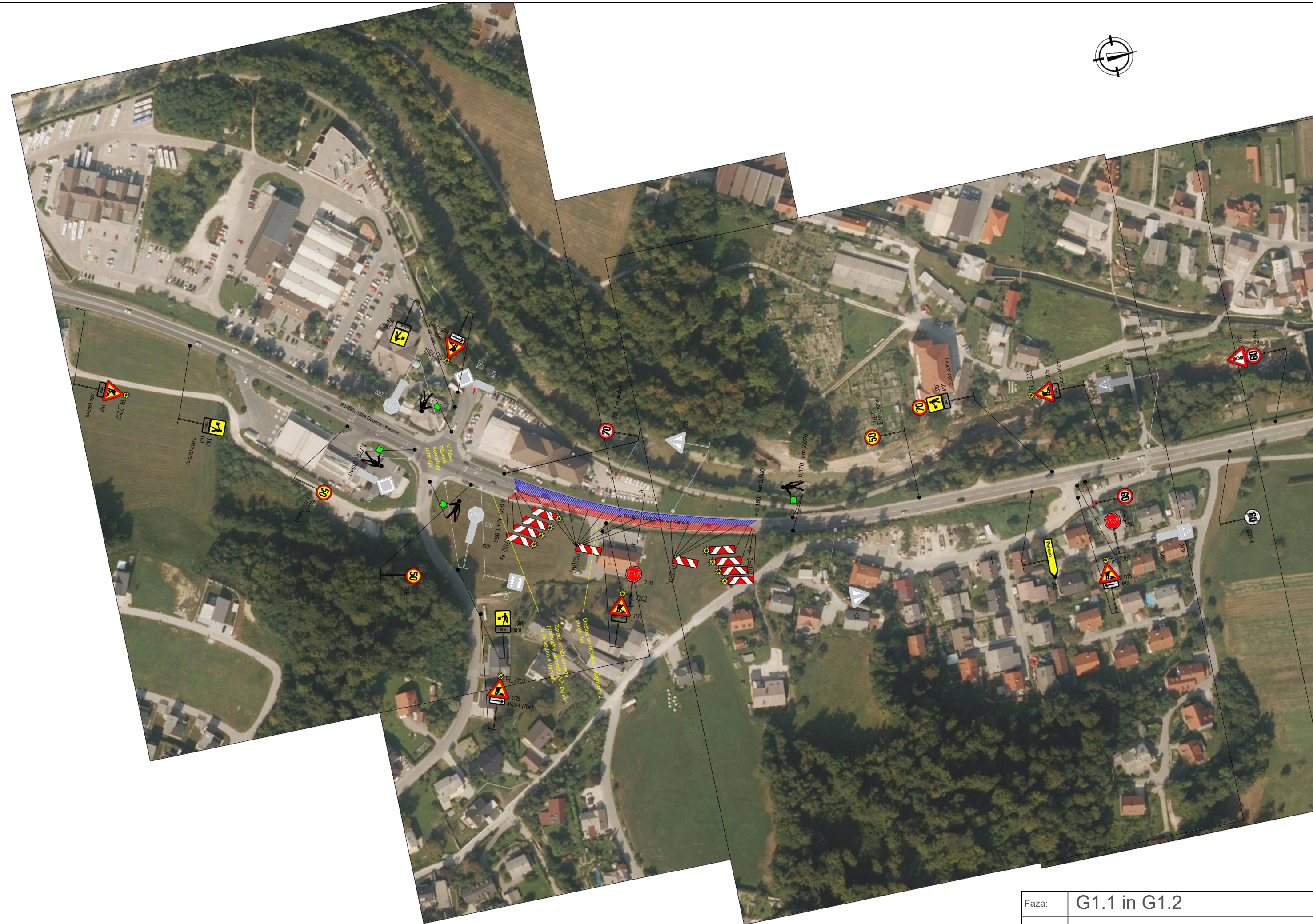
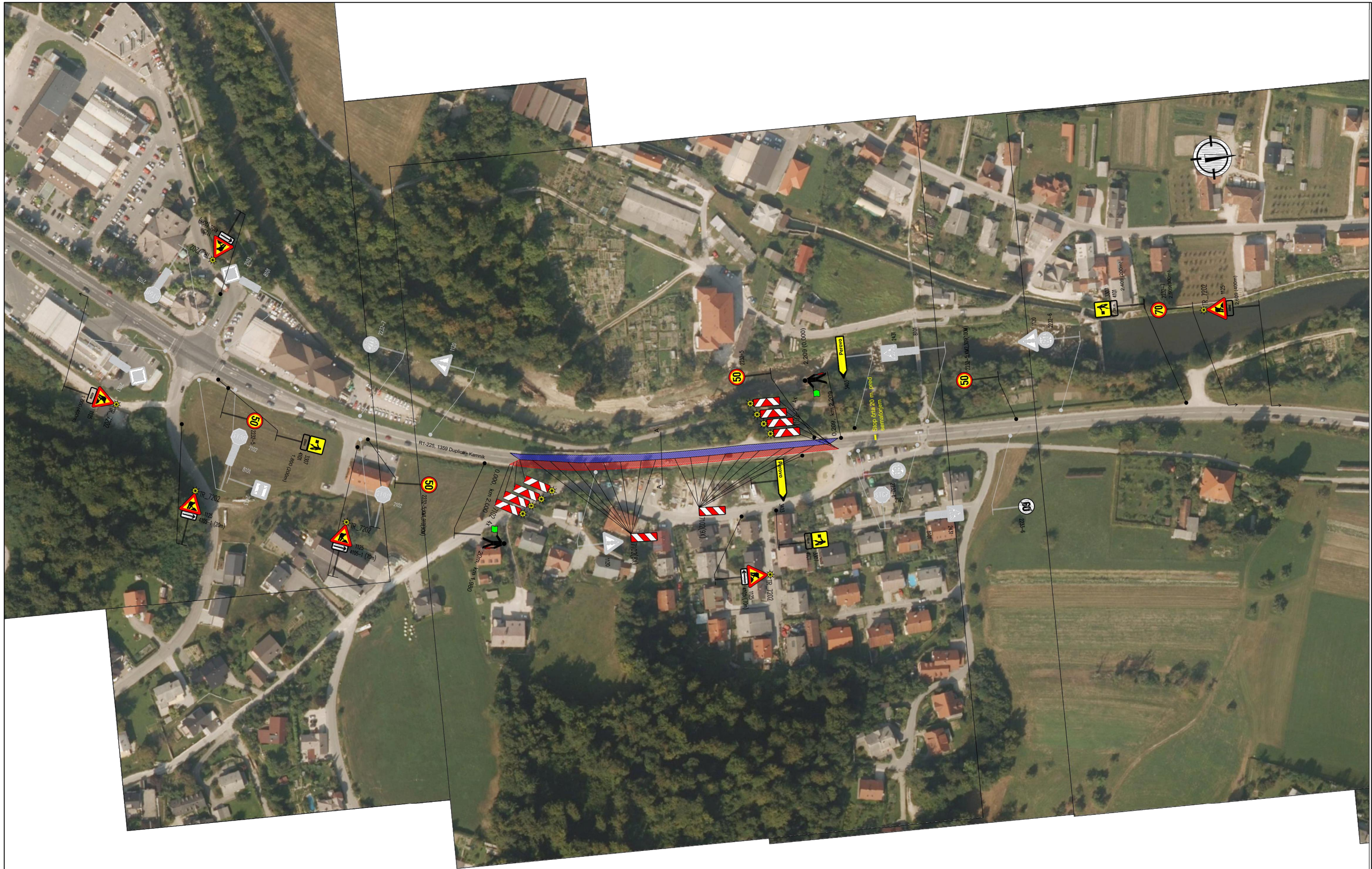




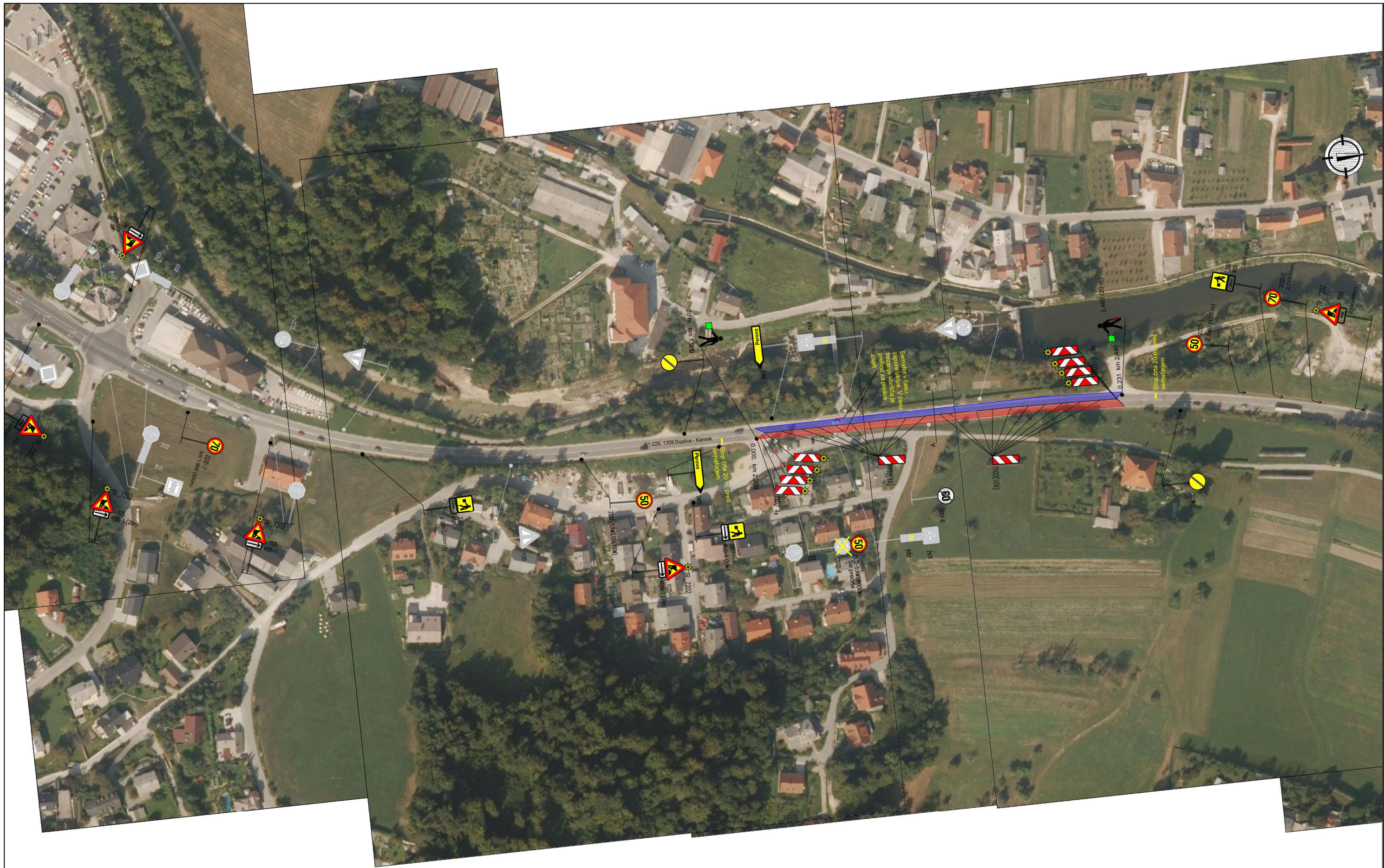
Faza:	G0
Risba:	Pregledni načrt
Merilo:	/



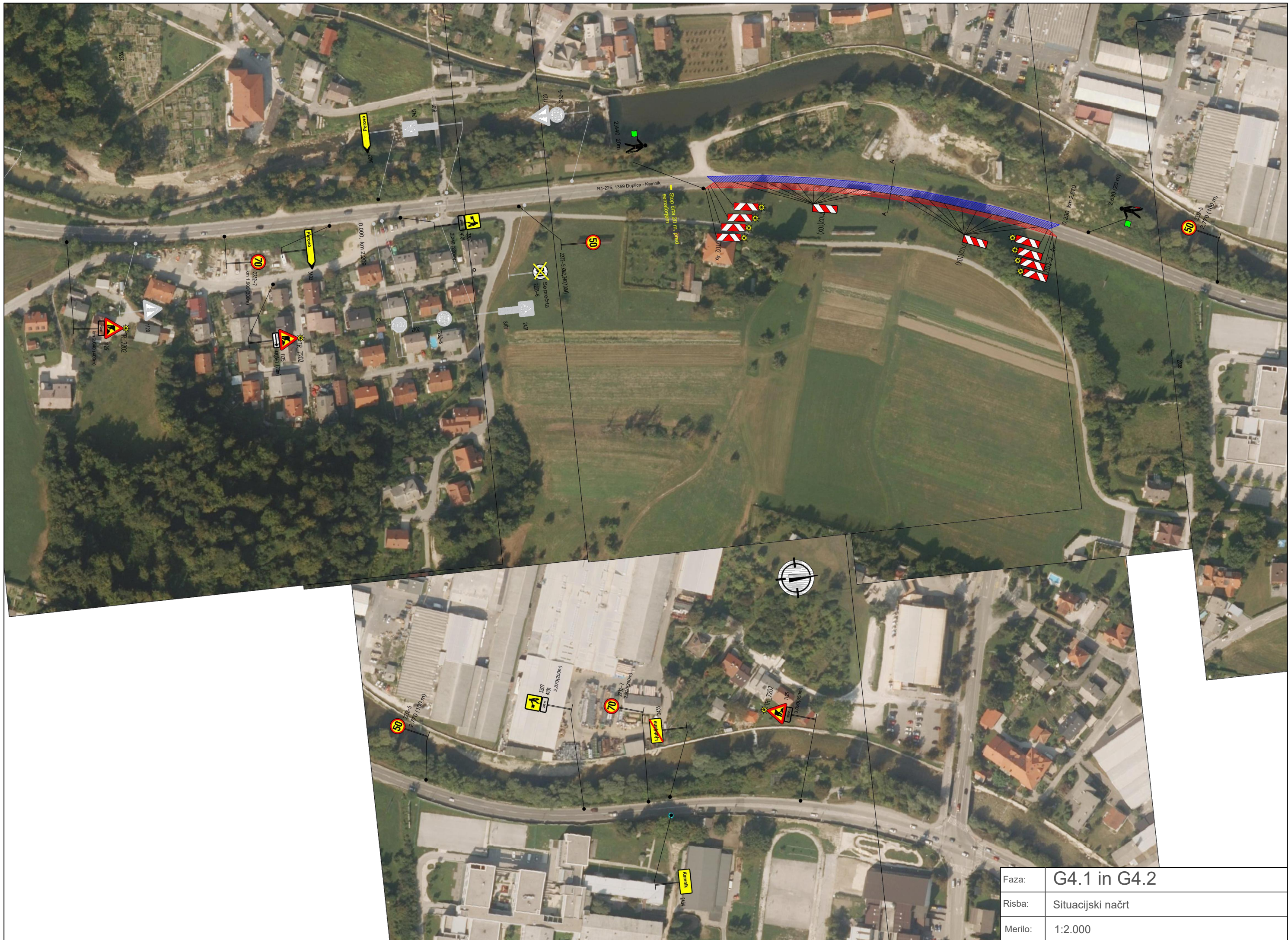
Faza:	G1.1 in G1.2
Risba:	Situacijski načrt
Merilo:	1:2.000



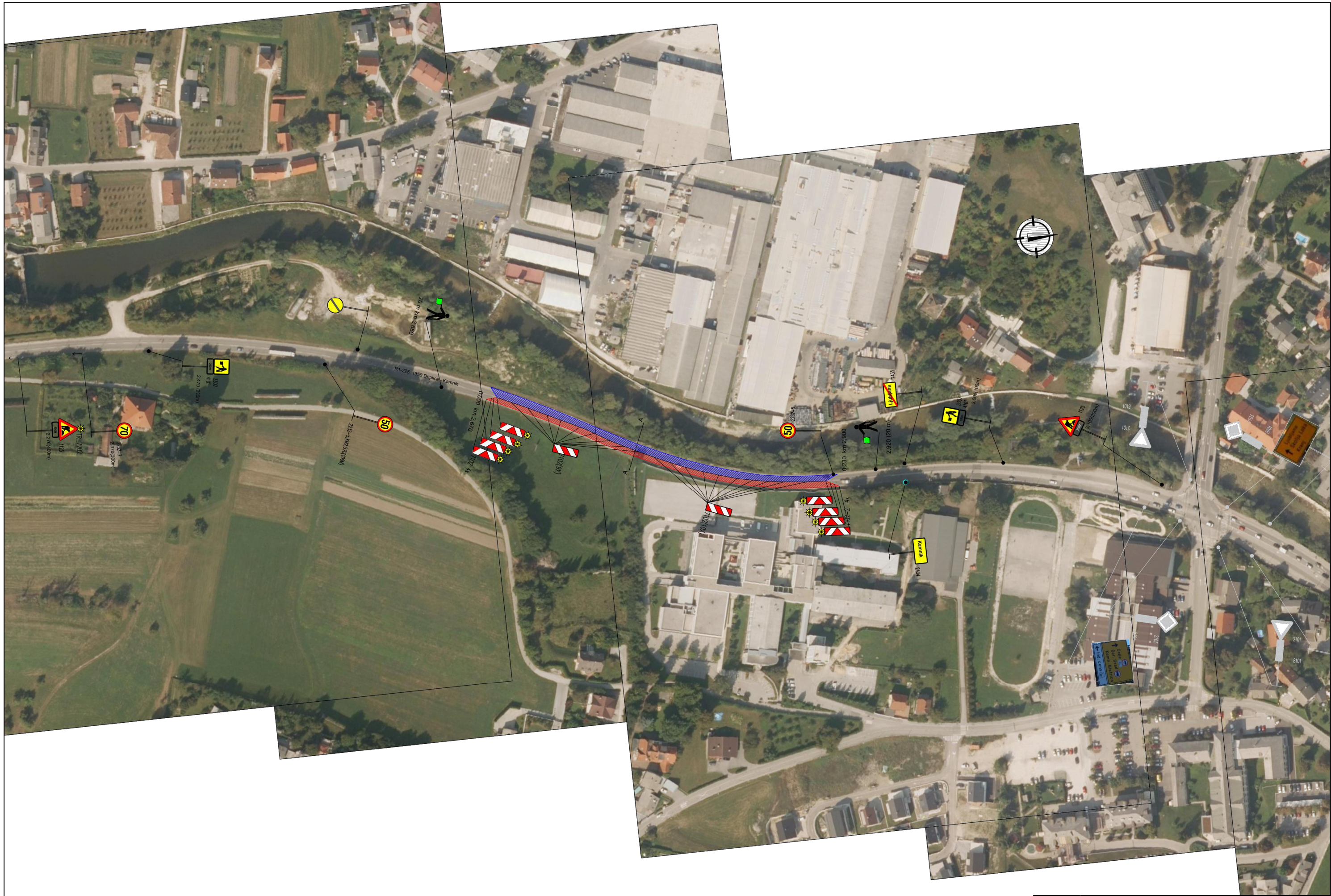
Faza:	G2.1 in G2.2
Risba:	Situacijski načrt
Merilo:	1:2.000



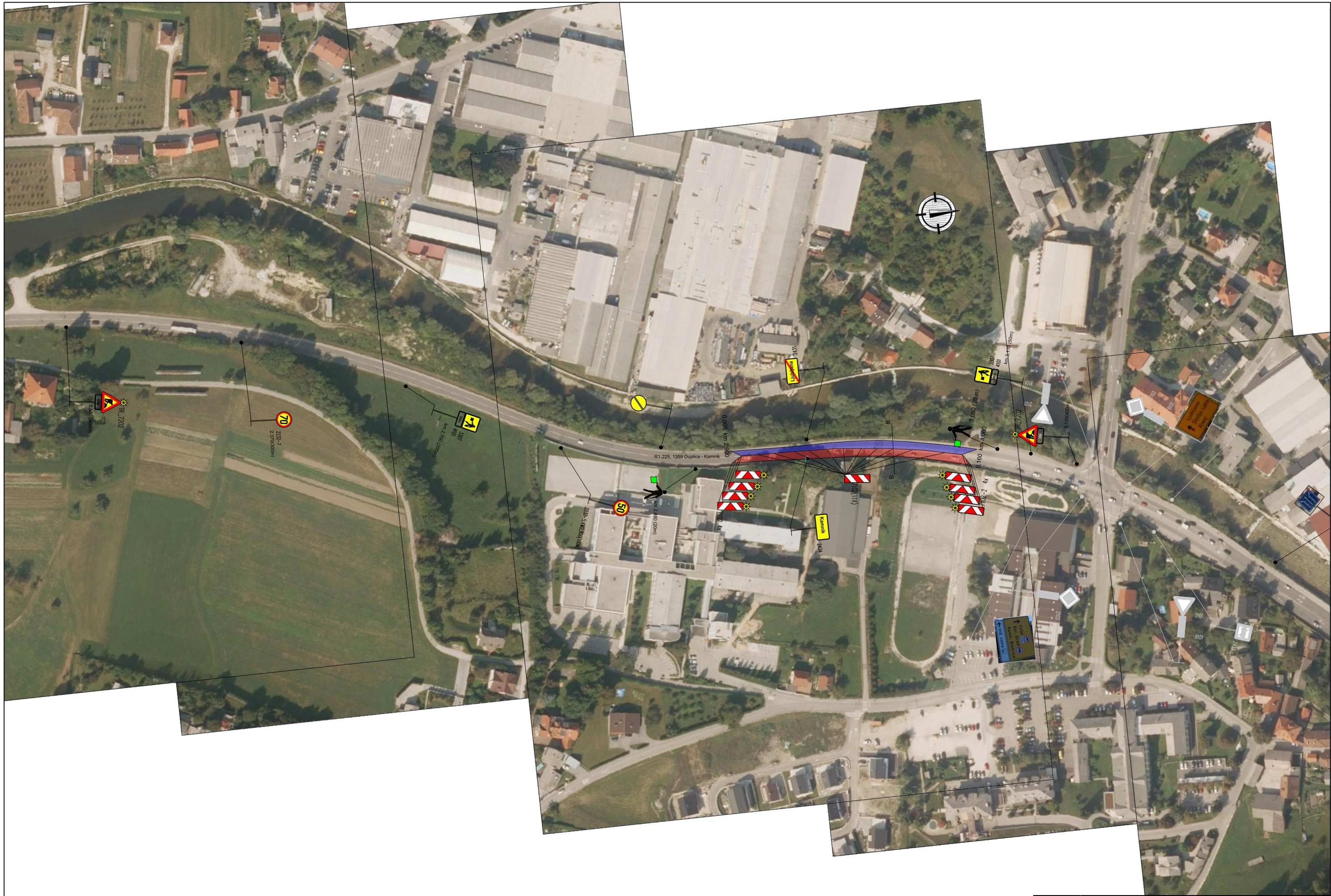
Faza:	G3.1 in G3.2
Risba:	Situacijski načrt
Merilo:	1:2.000



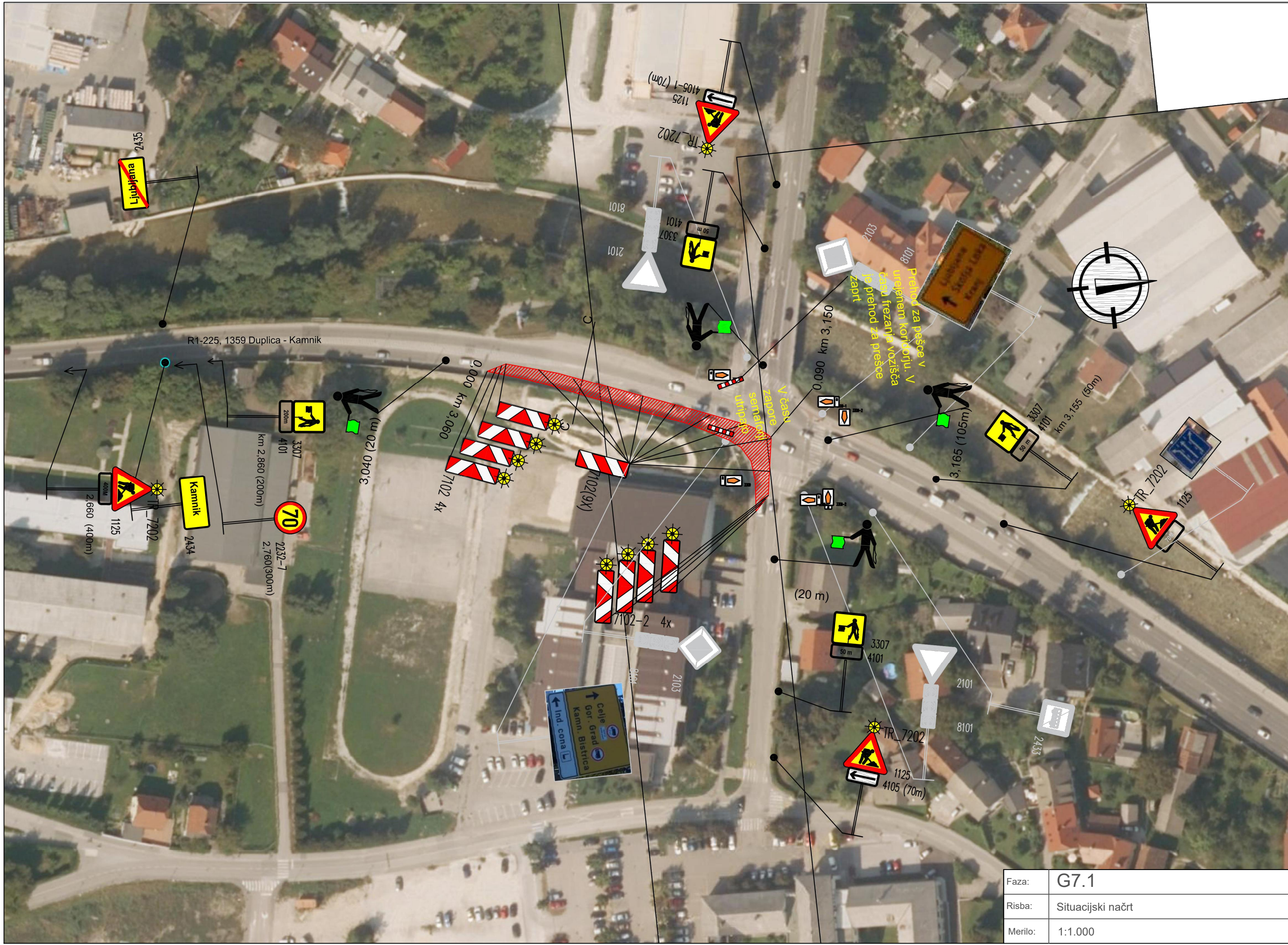
Faza:	G4.1 in G4.2
Risba:	Situacijski načrt
Merilo:	1:2.000



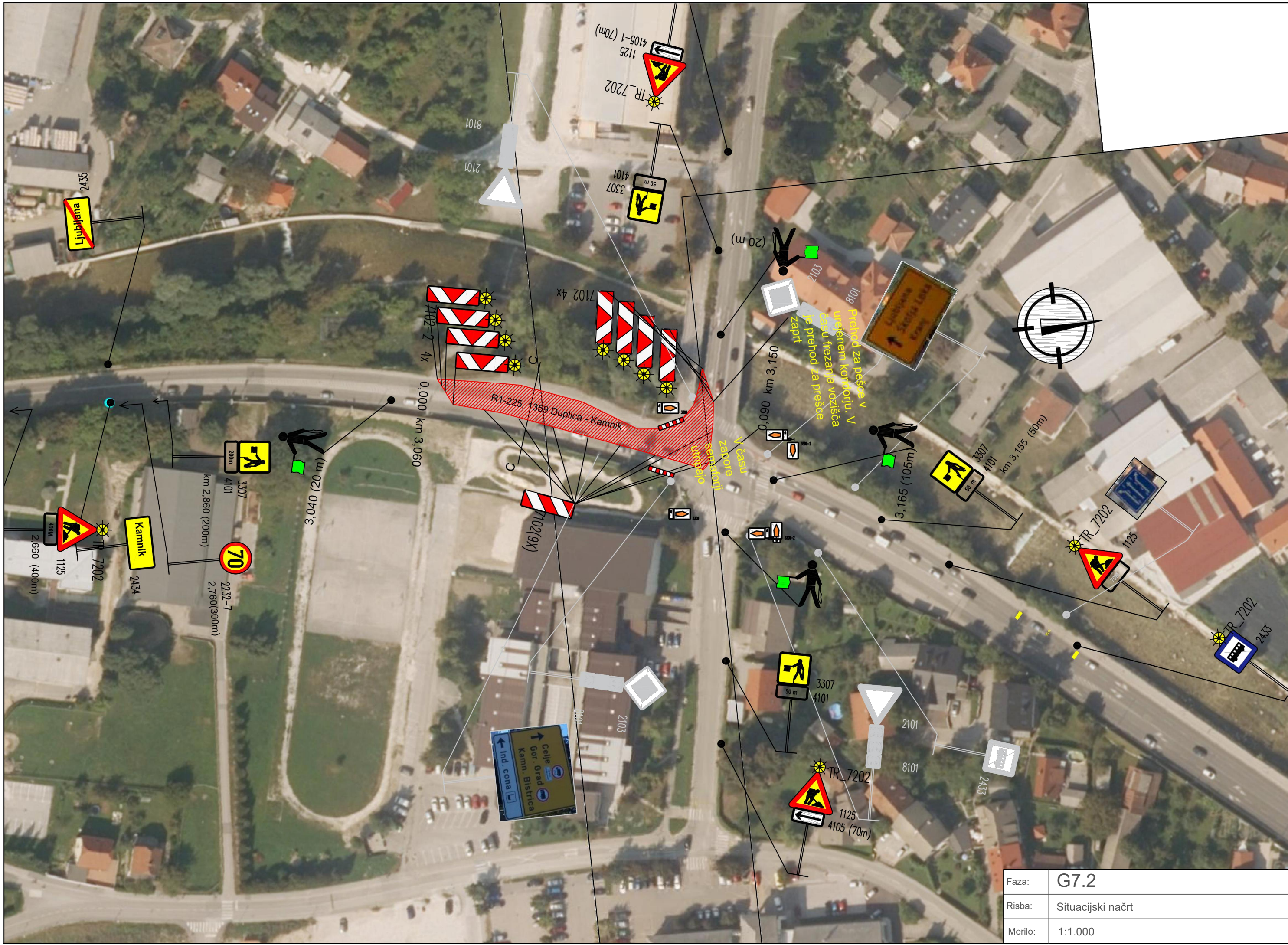
Faza:	G5.1 in G5.2
Risba:	Situacijski načrt
Merilo:	1:2.000



Faza:	G6.1 in G6.2
Risba:	Situacijski načrt
Merilo:	1:2.000



Faza:	G7.1
Risba:	Situacijski načrt
Merilo:	1:1.000



R1-225, 1369 Duplica - Kamnik

7102 4x

7102 2 4x

7102 (9x)

2103

2101

8101

4105-1 (70m)

1125

TR_7202

3307

4101

50 m

20 m

1018

Prihod za pešce v
uvleknem koridorju. V
časni frezani vozlišča
je prehod za prešede
zaprt

V času
zapore

3,165 km 3,155 (50m)

3307

4101

50 m

TR_7202

1125

TR_7202

2433

3,165 (105m)

3307

4101

50 m

2435

Ljubljana

2434

Kamnik

70

2232-7

2.760 (300m)

3307

4101

200m

km 2,860 (200m)

2,660 (400m)

1125

TR_7202

400m

3,040 (20 m)

0,000 km 3,060

2103

2101

8101

2433

3307

4101

50 m

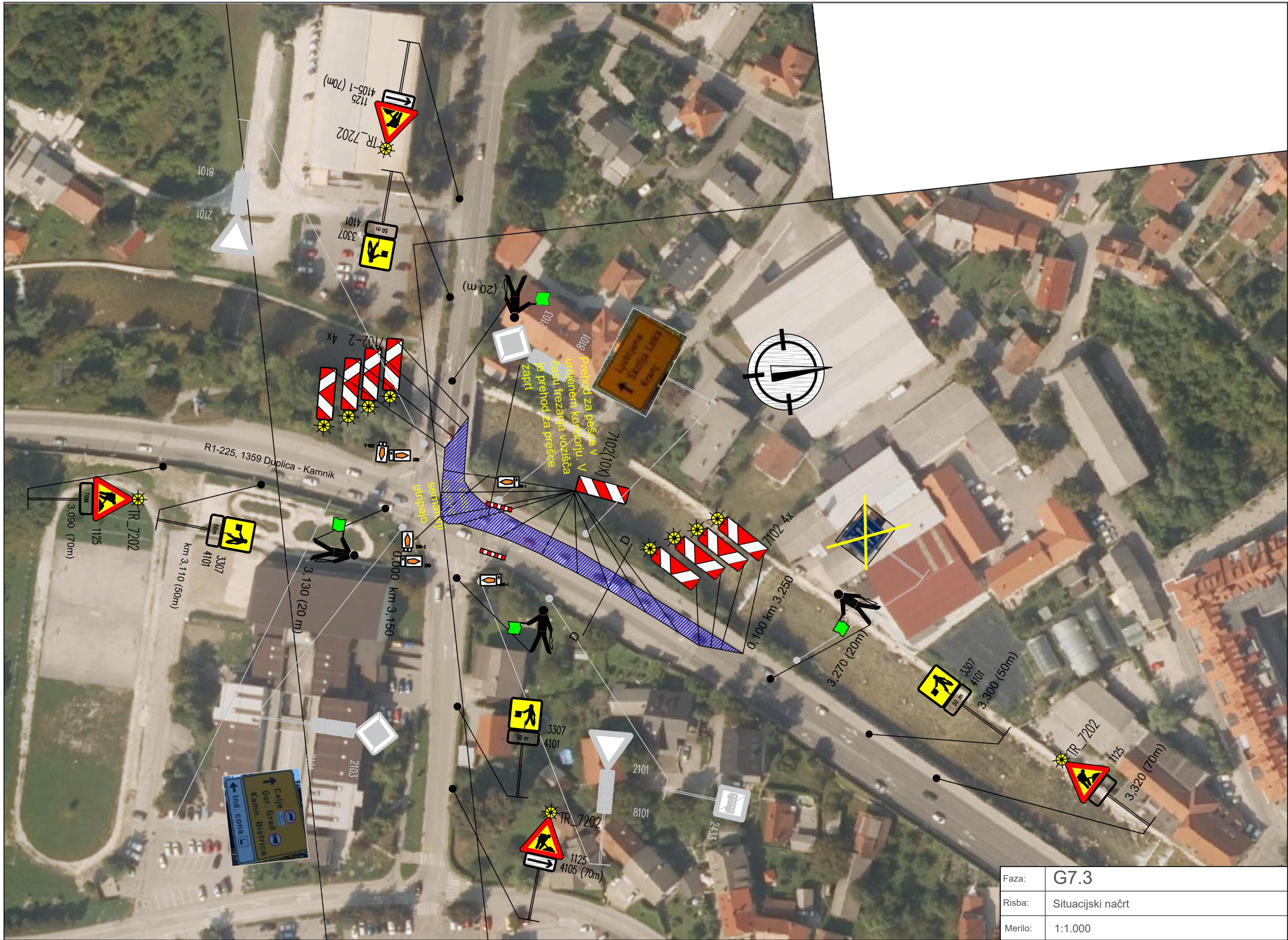
TR_7202

1125

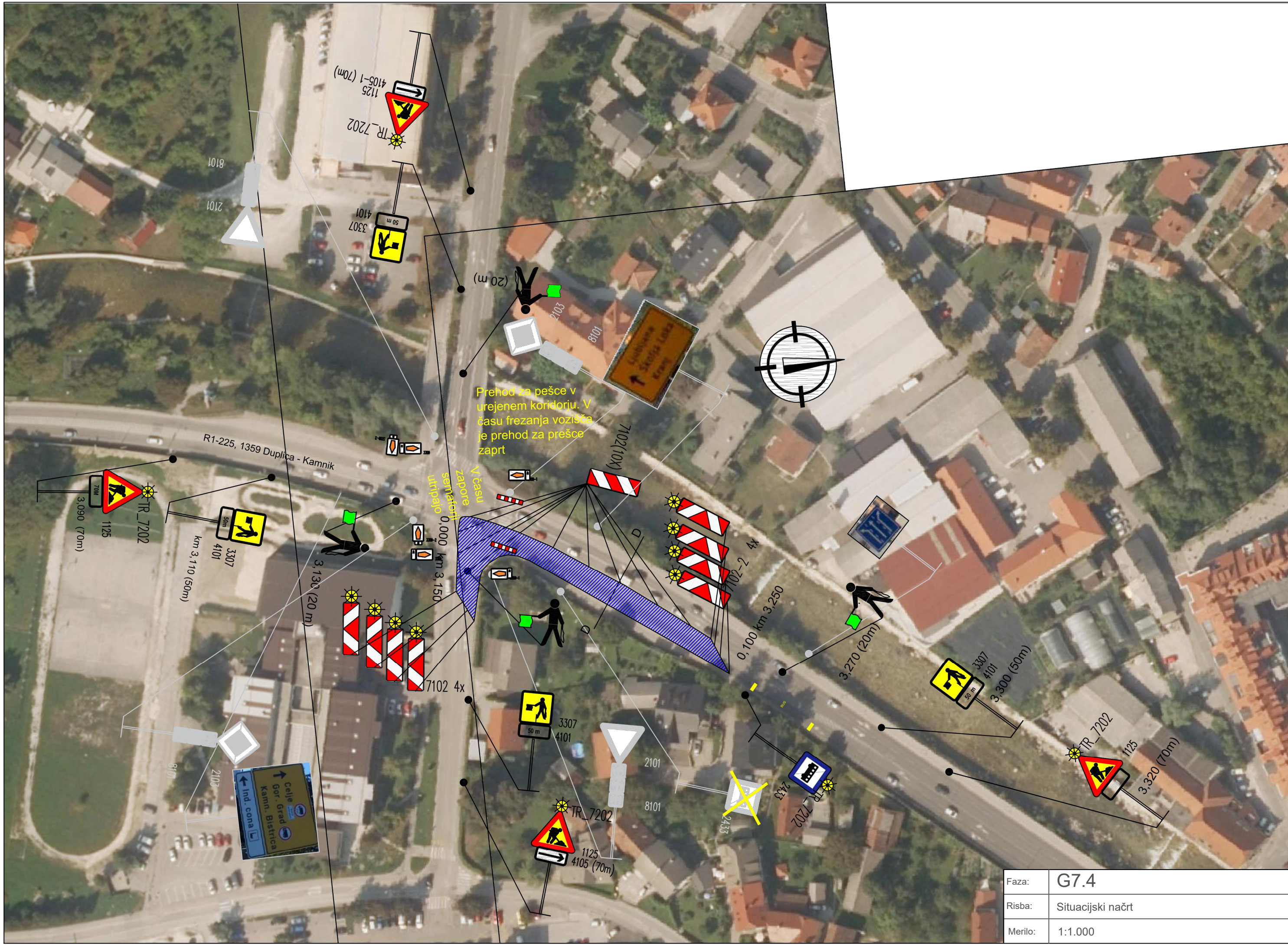
4105 (70m)

Celje
Gor. Grad
Kam. Bistrica
Ind. cona

Faza:	G7.2
Risba:	Situacijski načrt
Merilo:	1:1.000



Faza:	G7.3
Risba:	Situacijski načrt
Merilo:	1:1.000

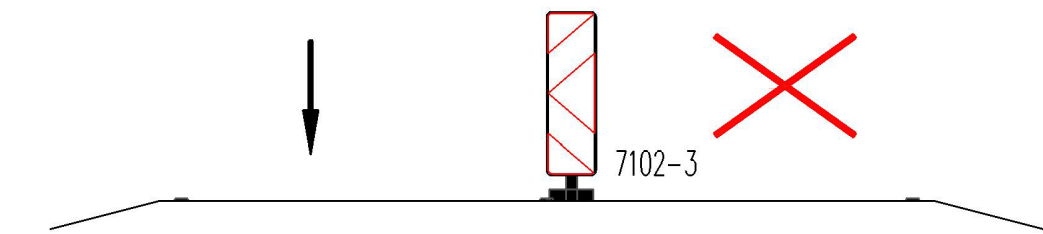
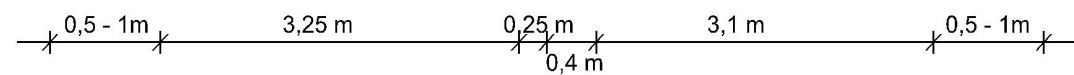
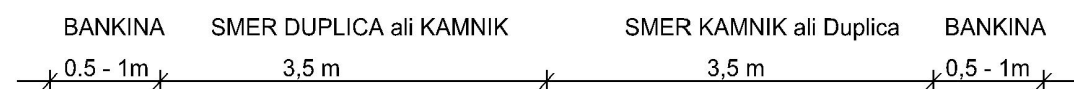


Faza:	G7.4
Risba:	Situacijski načrt
Merilo:	1:1.000

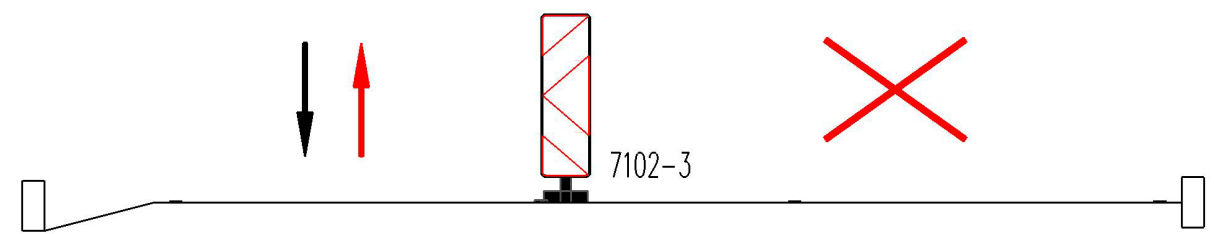
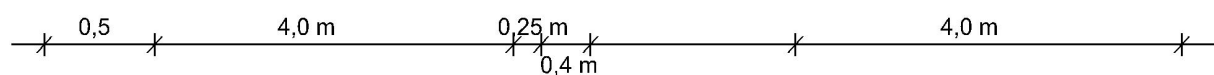
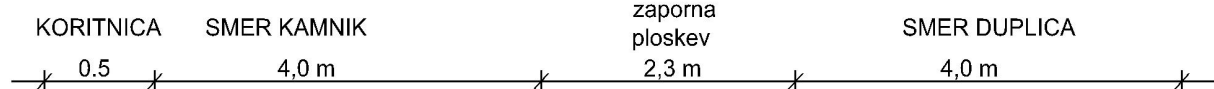


Faza:	G8
Risba:	Situacijski načrt
Merilo:	1:2.000

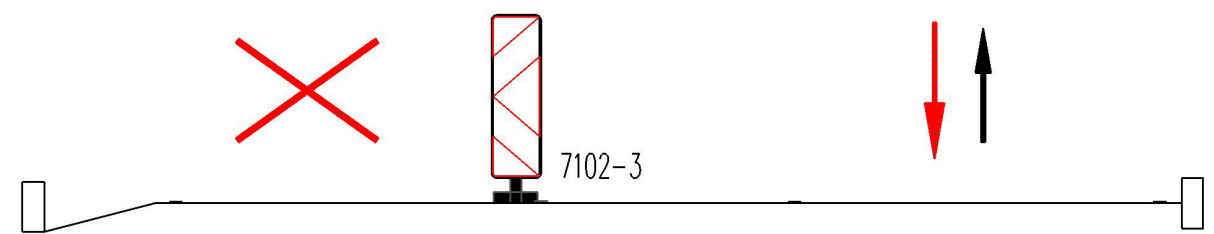
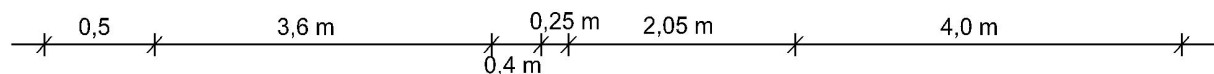
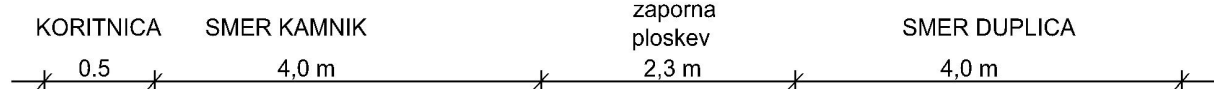
PREREZ A-A



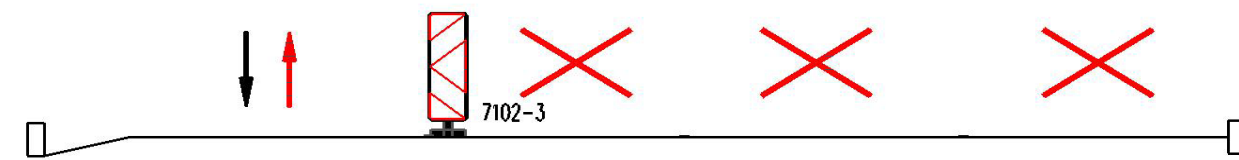
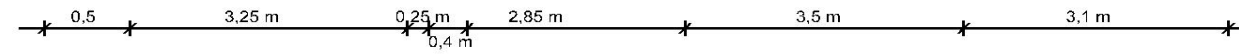
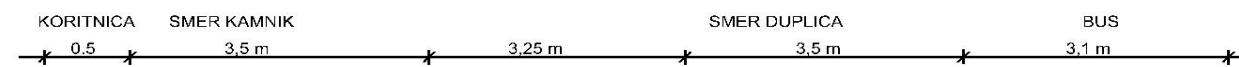
PREREZ B-B



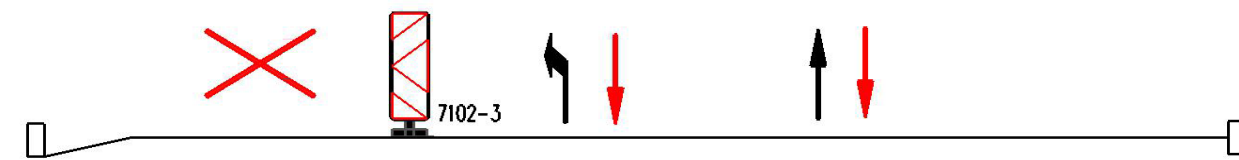
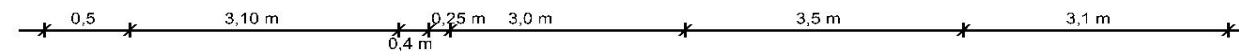
PREREZ B-B



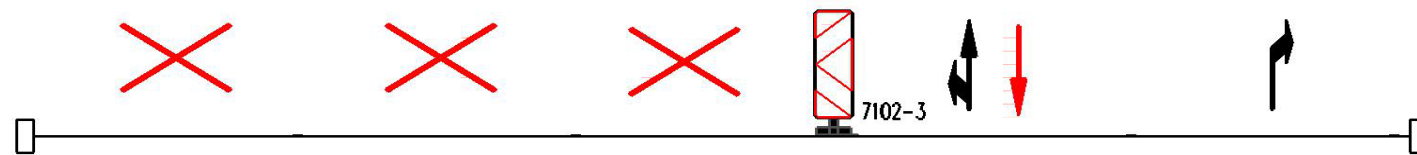
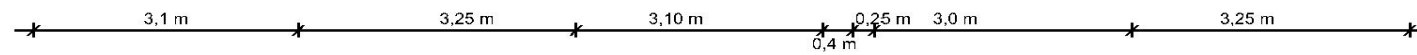
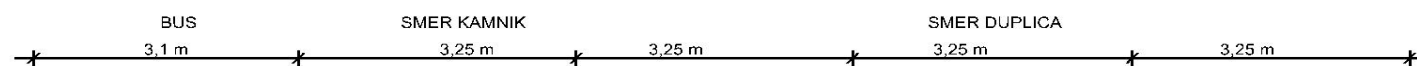
PREREZ C-C



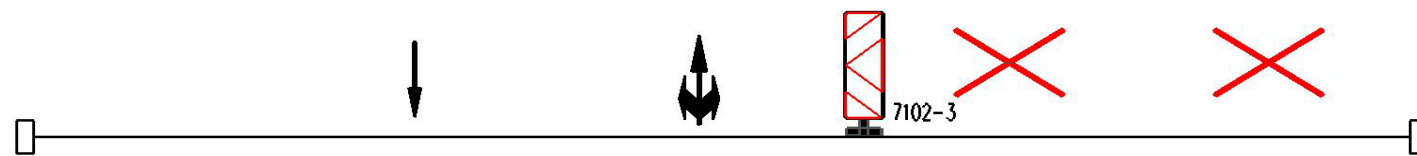
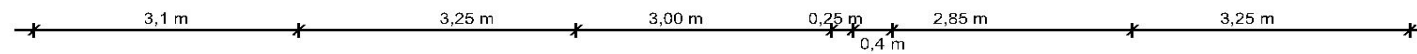
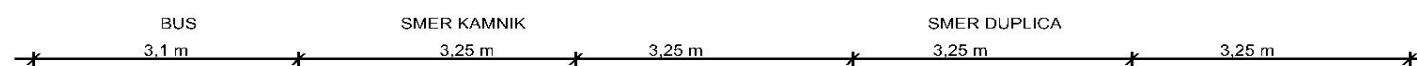
PREREZ C-C



PREREZ D-D



PREREZ D-D



Faza:	PP
Risba:	Prečni prerezi
Merilo:	/